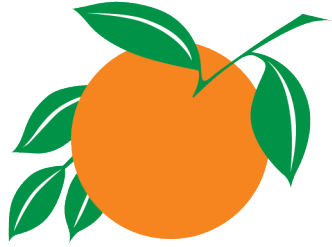


ORANGE



COUNTY
FLORIDA

Stakeholder Meeting

Proposed Amendments to Chapter 8
Boats and Water Safety Ordinance

June 18, 2026

BACKGROUND

- 1983 - Board of County Commissioners (Board) adopted Chapter 8 Boats and Water Safety Ordinance
- 1985 - County Amendment
 - Required children under 6 years to wear personal flotation device
- 1987 - County Amendment
 - Allowed barefoot skiers to wear specially designed flotation wetsuits



BACKGROUND

- 1995 - County Amendments:
 - Expanded ordinance limits to countywide
 - Various requirements for personal floatation devices
 - No wake zone requirements
 - Addition of boating distance language
 - Requirement for swimmers and divers to use safety identification
 - Prohibited trespassing to docks and damage to public and private property



BACKGROUND

- 2009 - Amendment to Florida Statute Chapter 327.46
 - Pre-empted local regulations regarding boating safety
 - Required Florida Fish and Wildlife Conservation Commission (FWC) adoption of local ordinances for establishing boating restricted areas on Florida waterbodies
- Orange County sustained grandfathered status of Chapter 8 Ordinance



BACKGROUND

- August 2020 - District 1 Commissioner expressed concerns of public safety and ongoing natural resources and wildlife impacts to a popular public recreation area within Lake Butler, located at Egret (Bird) Island
- September 2020 - Board directed staff to identify a Swim Area & Vessel Exclusion Zone (SAVE) adjacent to Egret (Bird) Island
 - FWC required the County to adopt an ordinance for the establishment and enforcement of the SAVE



BACKGROUND

- FWC authorized the County to proceed with amending the Chapter 8 Ordinance in two phases:
 - Phase I: designate a SAVE at Egret (Bird) Island
 - Phase II: bring the current Chapter 8 Ordinance into compliance with State Statutes for existing and proposed boating safety zones on our County lakes, update the Ordinance language for enforceability of boating safety regulations



BACKGROUND

Update to Phase 1

- Swim Area & Vessel Exclusion zone designation at Egret (Bird) Island
- Project completed August 25, 2023
- Ongoing discussions with permitting agencies for Phase II updates

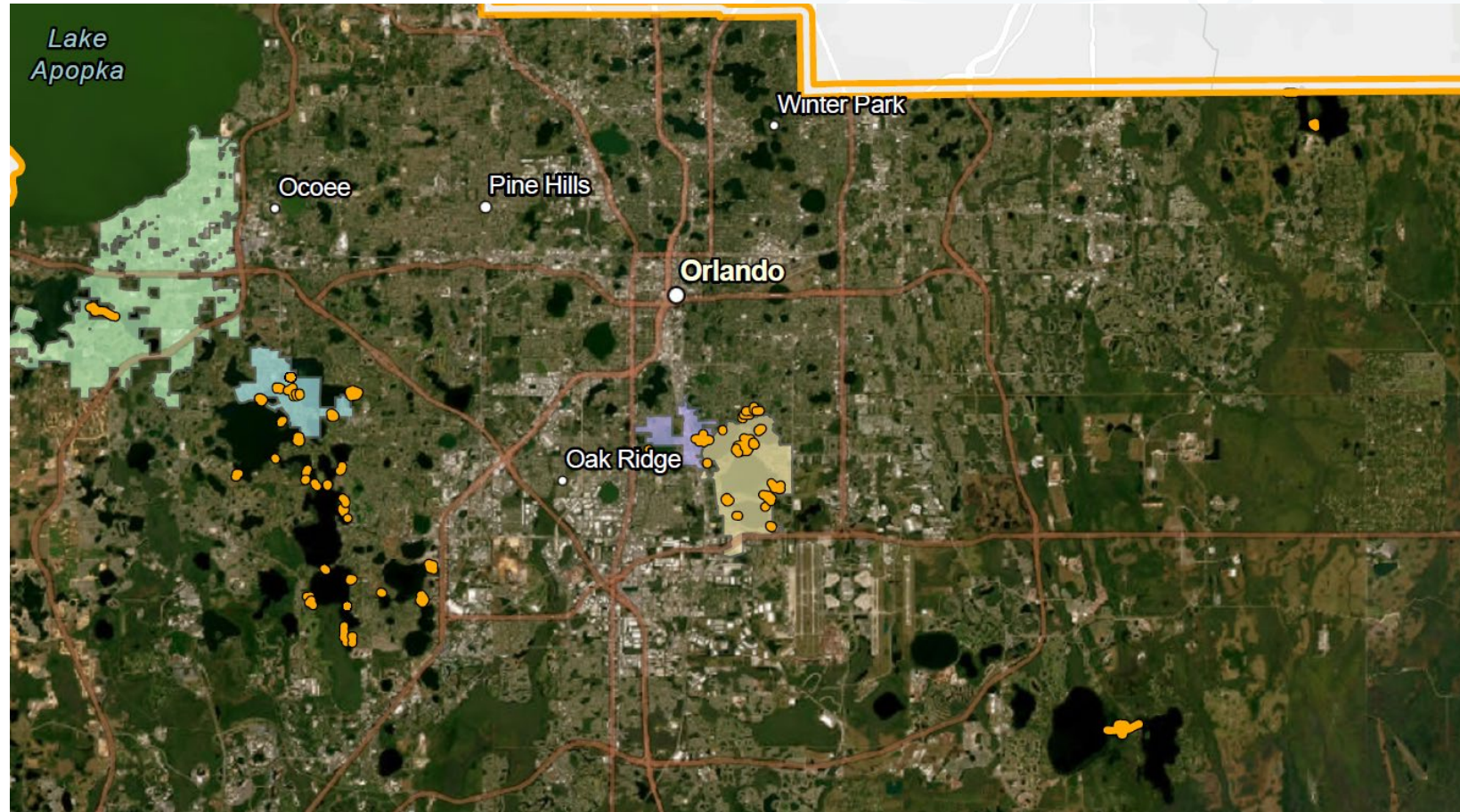


BOATING RESTRICTED AREAS: PHASE II

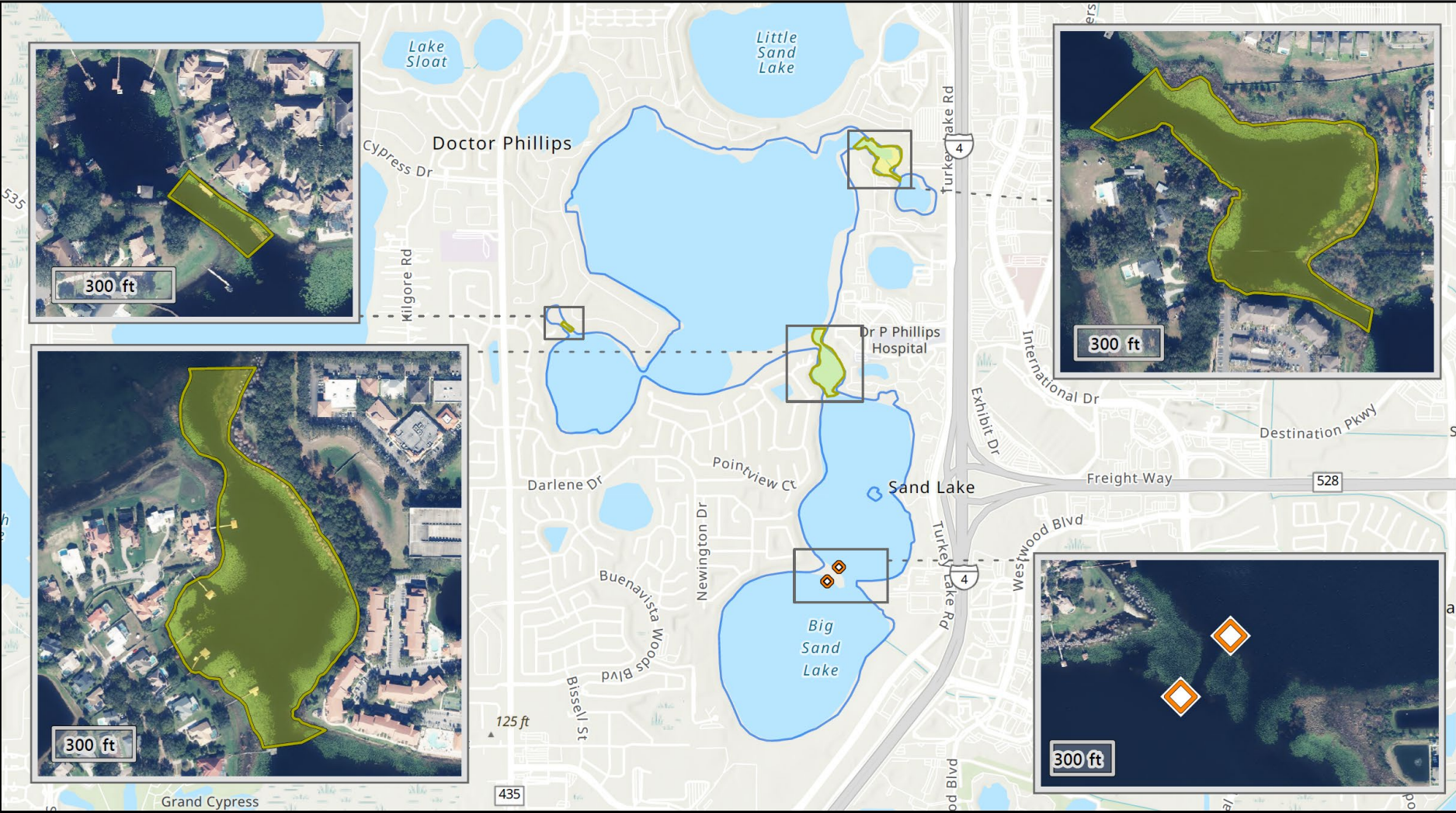
- Phase II updates:
- Remove language not consistent with Chapter 327.46, Florida Statutes
- Reflect State Statute requirements for existing FWC Uniform Waterway Marker Permit program
 - Big Sand Lake, Butler Chain of Lakes, Conway Chain of Lakes, and Lake Jessamine
 - 40 boating safety zones
 - Funded by respective lake taxing districts
- Establish 13 Boating Safety Zones recommended by the Orange County Sheriff's Office (OCSO) on Big Sand Lake, Butler Chain of Lakes, Conway Chain of Lakes, Lake Jessamine, Johns Lake, Lake Pickett, Lake Mary Jane, and Lake Hart

PROPOSED BOATING RESTRICTED AREAS: PHASE II

- Big Sand Lake
- Butler Chain of Lakes
- Conway Chain of Lakes
- Lake Hart
- Lake Mary Jane
- Lake Jessamine
- Johns Lake
- Lake Pickett



PROPOSED BOATING RESTRICTED AREAS: PHASE II



Big Sand Lake

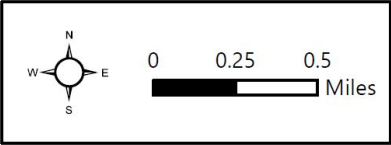
Legend

Zone Type

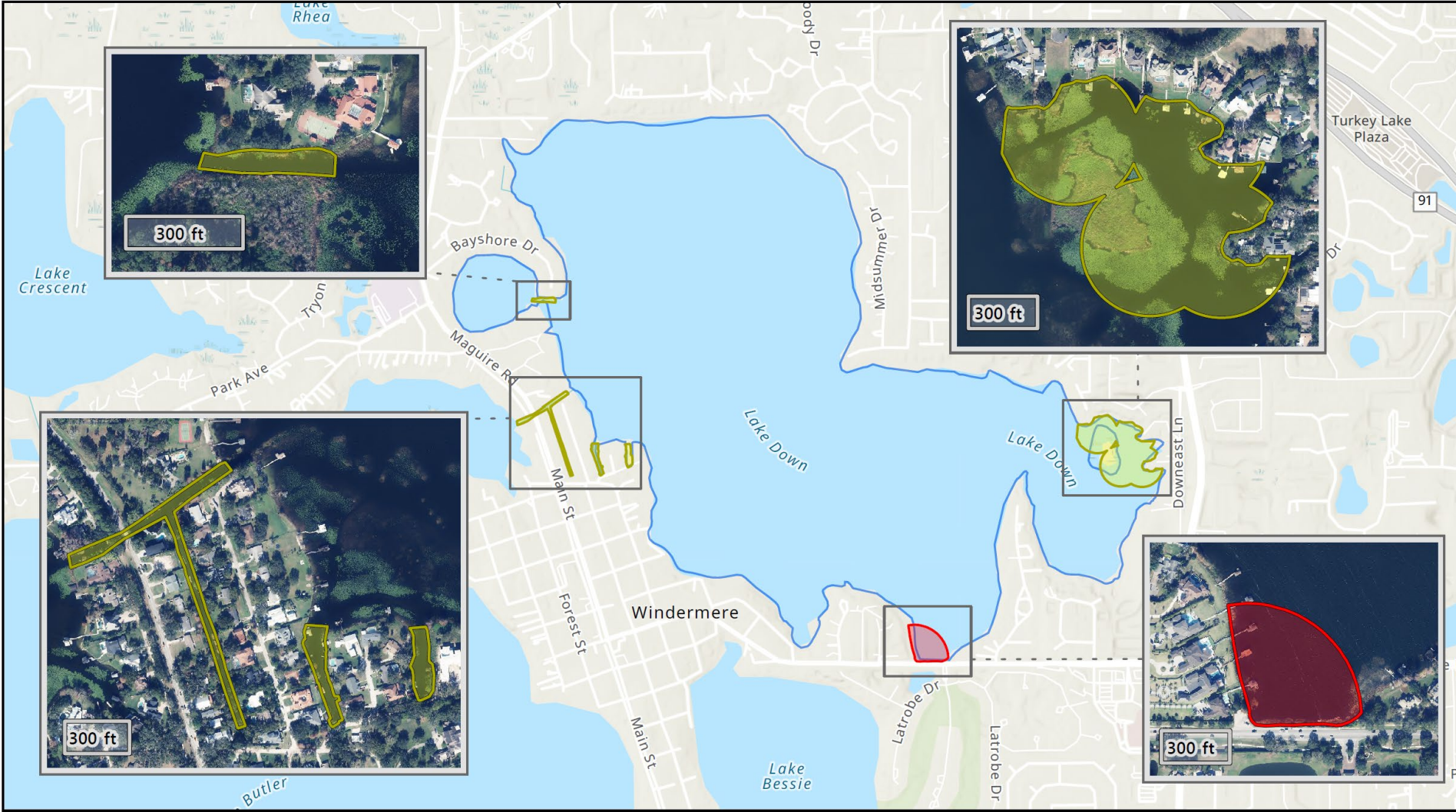
- Slow Speed, Minimum Wake

Nonregulatory Zone

- Shallow Area
- Lake Boundary



PROPOSED BOATING RESTRICTED AREAS: PHASE II



Lake Down

Legend

Zone Type

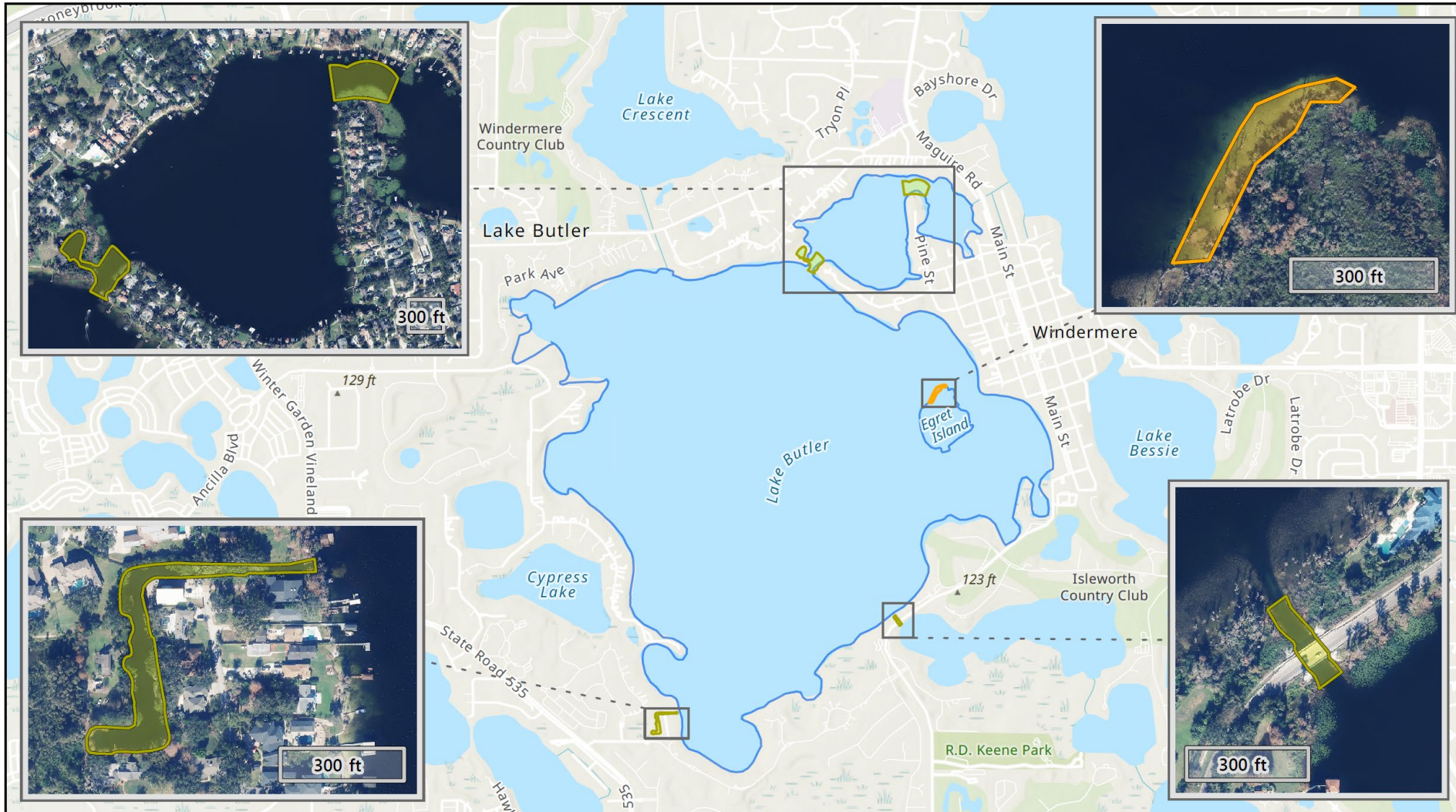
- Idle Speed, No Wake
- Slow Speed, Minimum Wake
- Lake Boundary

0 0.13 0.25 Miles

ORANGE COUNTY FLORIDA

APPLIED ECOLOGY

PROPOSED BOATING RESTRICTED AREAS: PHASE II

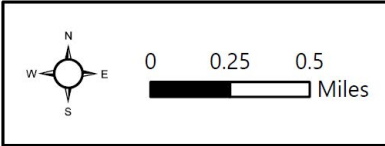


Lake Butler & Wauseon Bay

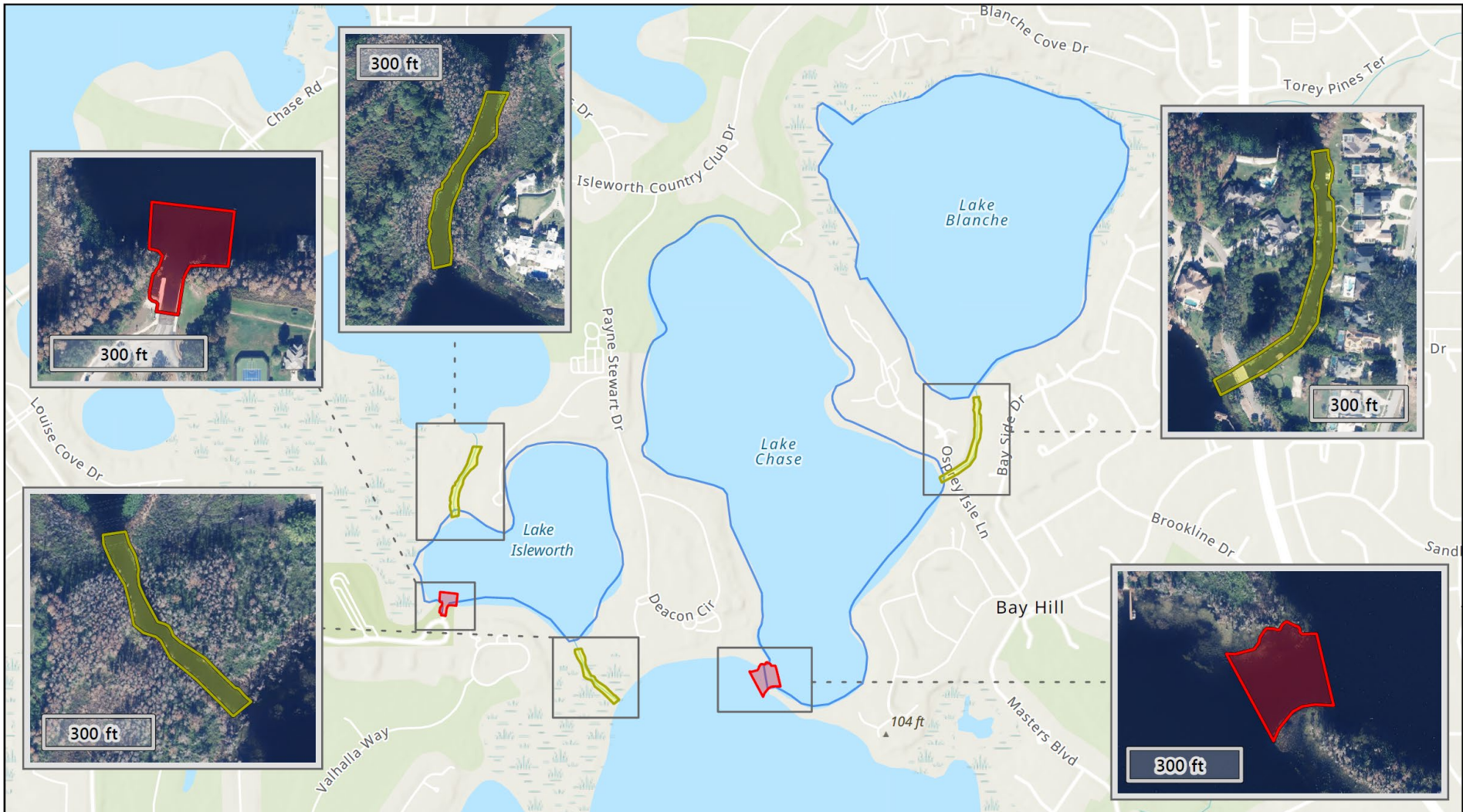
Legend

Zone Type

- Slow Speed, Minimum Wake
- Swim Area & Vessel Exclusion
- Lake Boundary



PROPOSED BOATING RESTRICTED AREAS: PHASE II

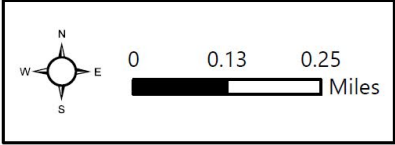


Lake Isleworth, Chase, & Blanche

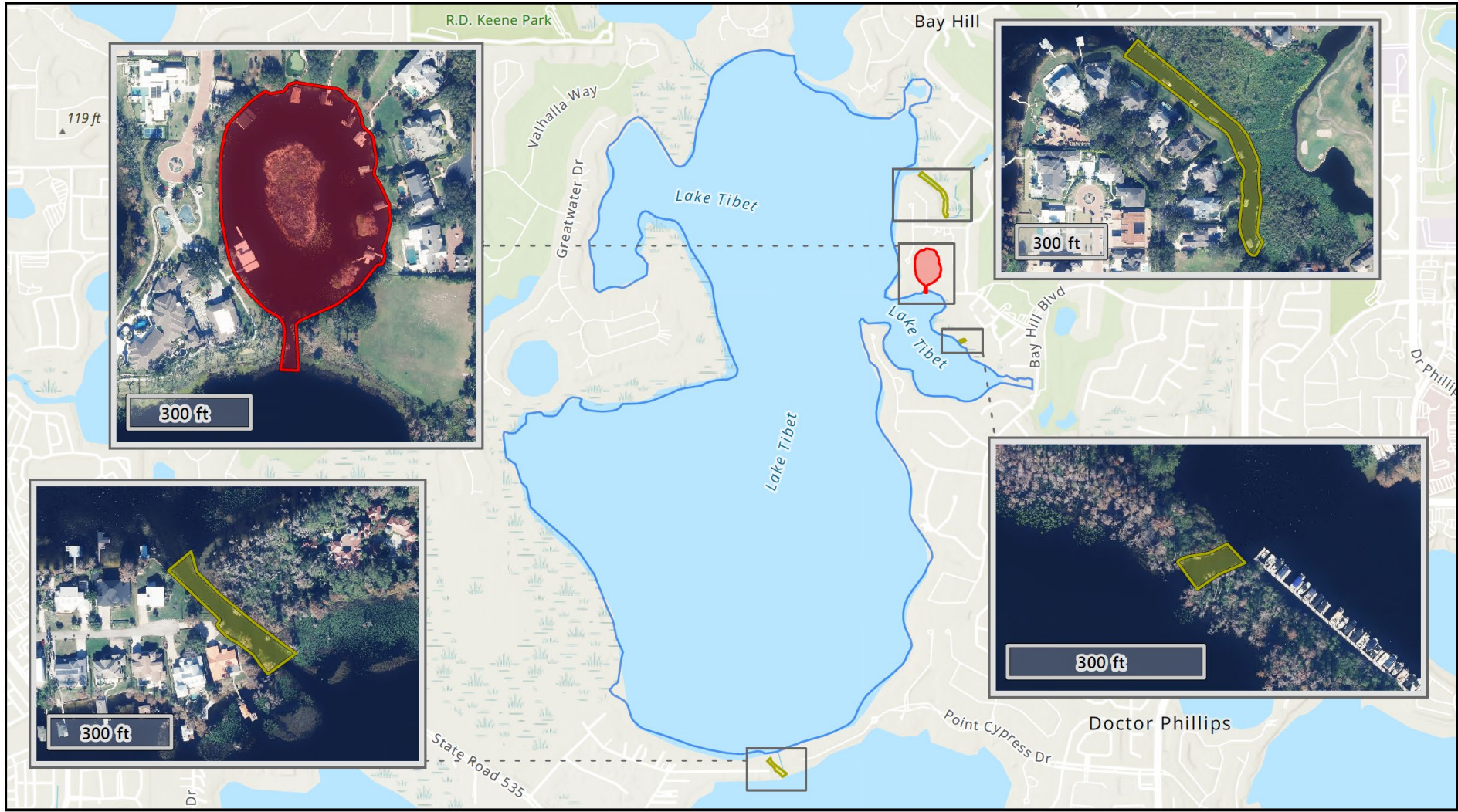
Legend

Zone Type

- Idle Speed, No Wake
- Slow Speed, Minimum Wake
- Lake Boundary





PROPOSED BOATING RESTRICTED AREAS: PHASE II

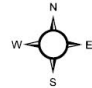


Lake Tibet


Legend

Zone Type

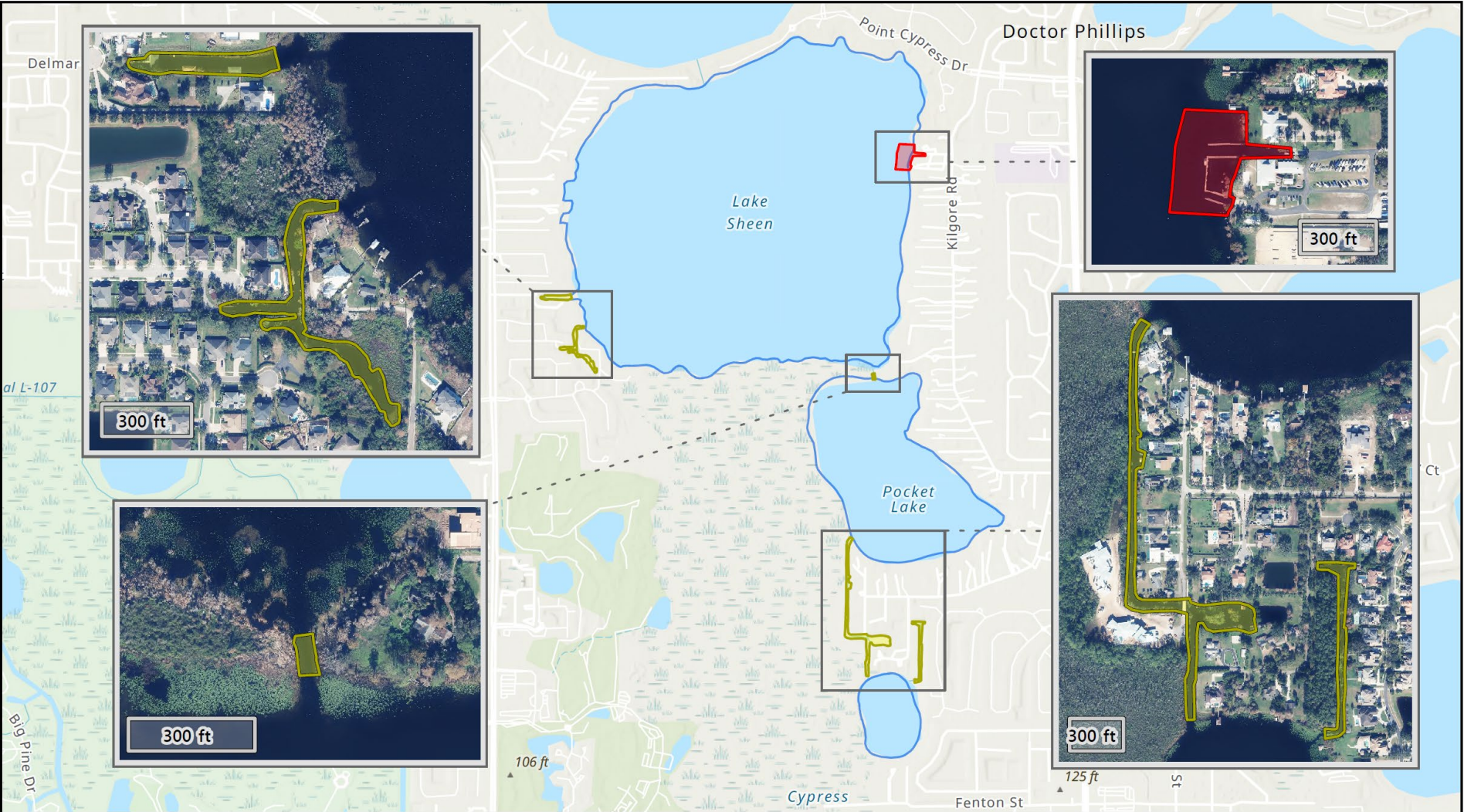
-  Idle Speed, No Wake
-  Slow Speed, Minimum Wake
-  Lake Boundary



0 0.13 0.25 Miles



PROPOSED BOATING RESTRICTED AREAS: PHASE II



Lake Sheen, Pocket Lake, & Little Fish Lake

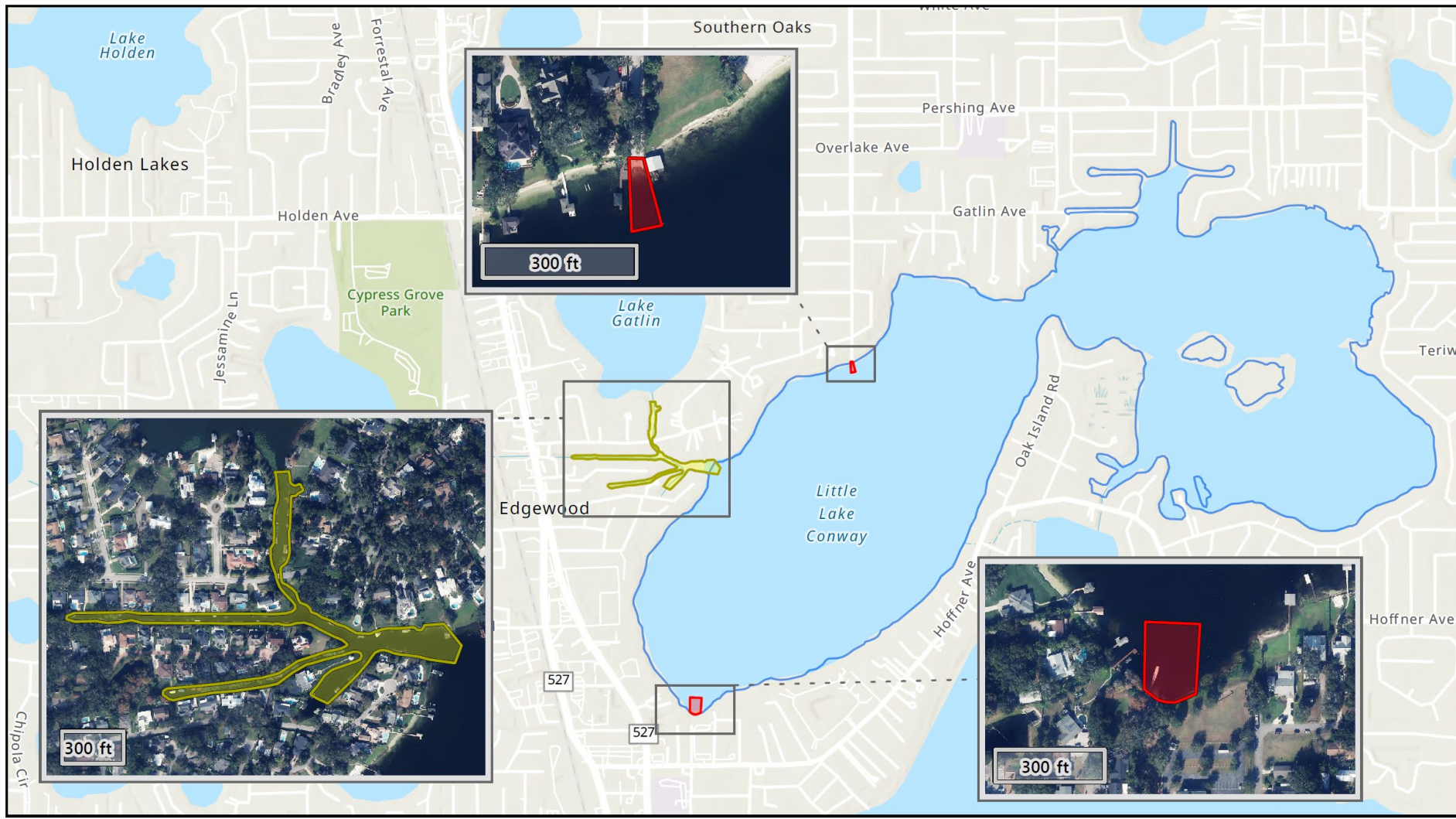
Legend

Zone Type

- Idle Speed, No Wake
- Slow Speed, Minimum Wake
- Lake Boundary

0 0.13 0.25 Miles

PROPOSED BOATING RESTRICTED AREAS: PHASE II



Little Lake Conway (West)

Legend

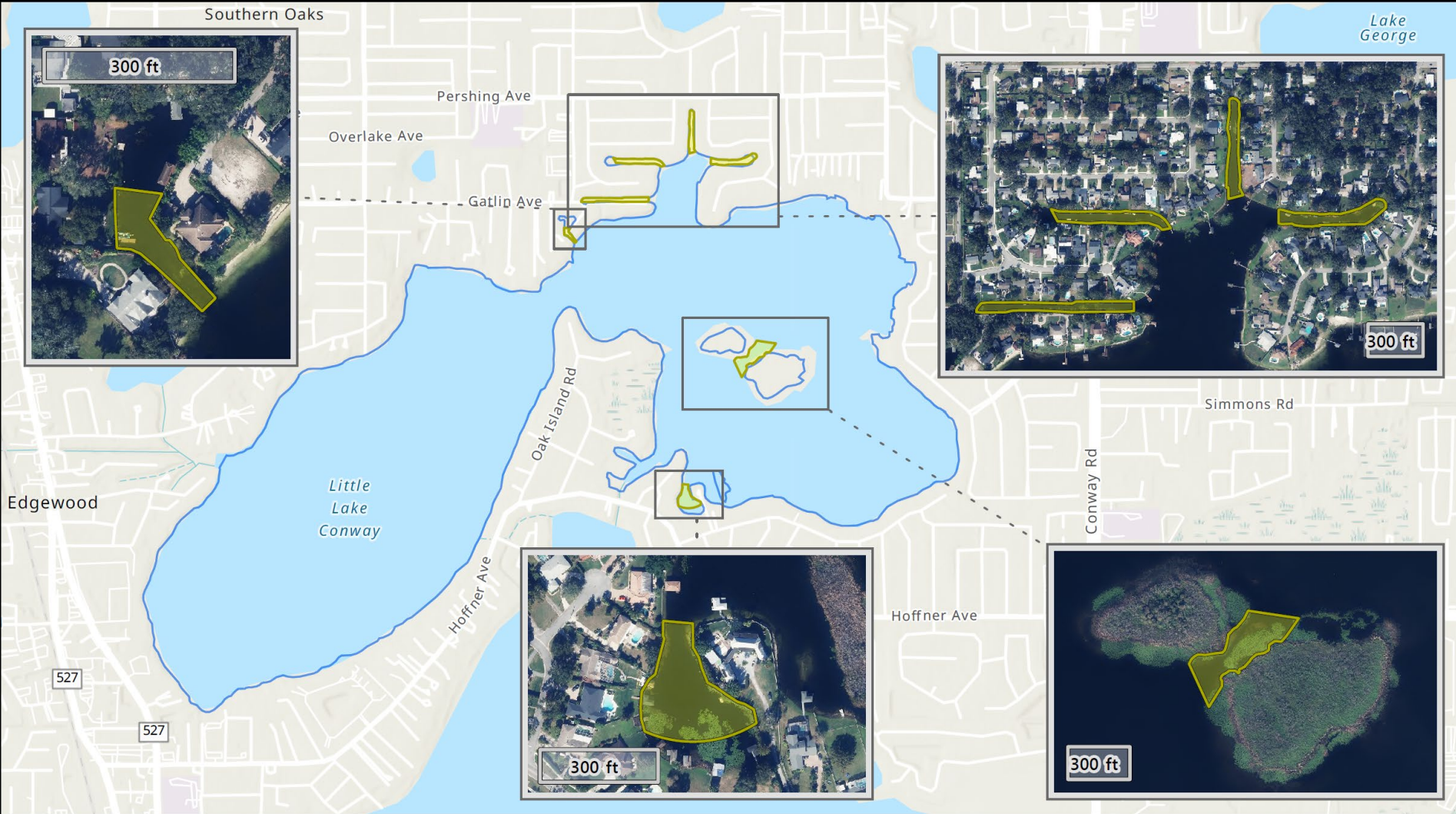
Zone Type

- Idle Speed, No Wake
- Slow Speed, Minimum Wake
- Lake Boundary

0 0.13 0.25 Miles

ORANGE COUNTY FLORIDA
APPLIED ECOLOGY

PROPOSED BOATING RESTRICTED AREAS: PHASE II

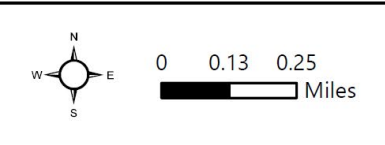


Little Lake Conway (East)

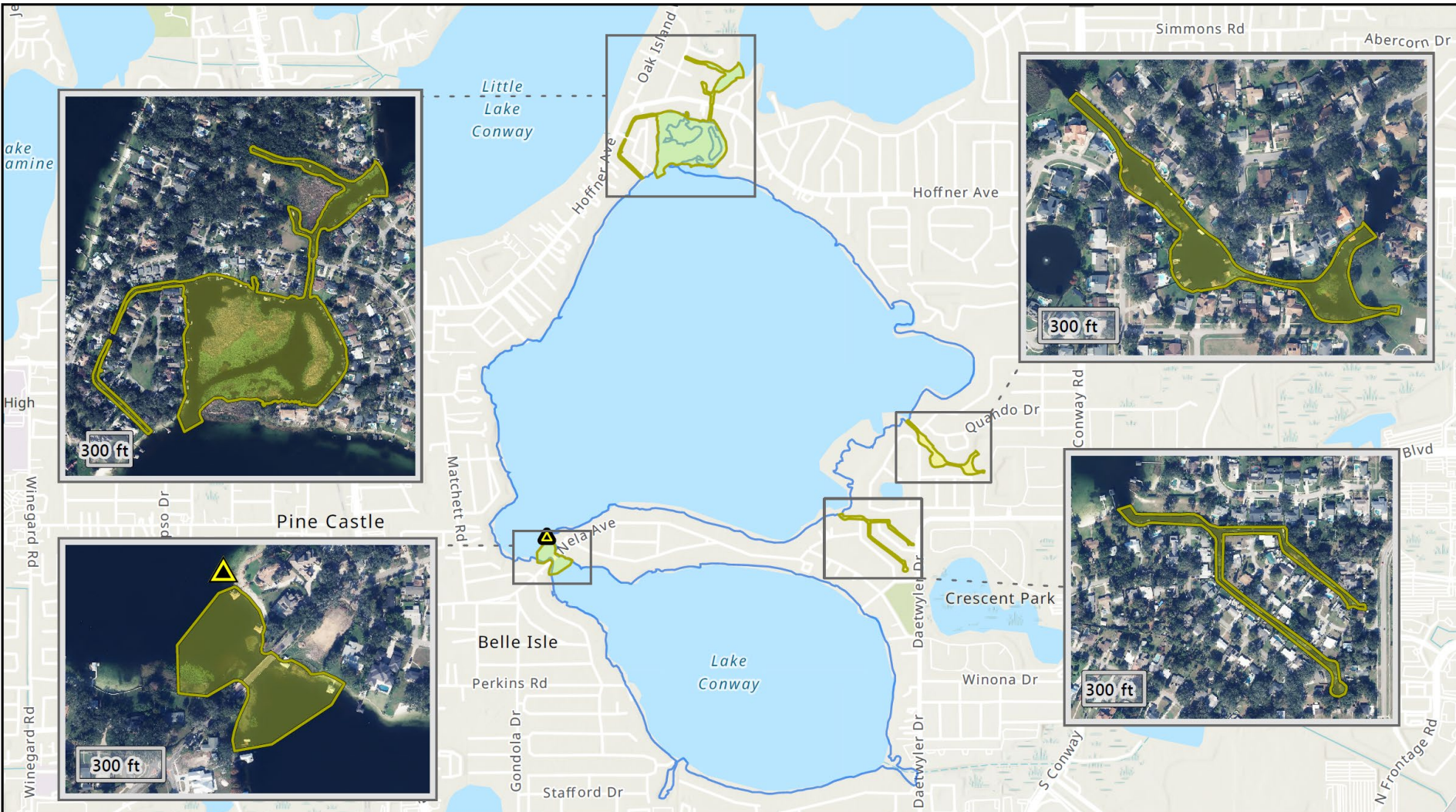
Legend

Zone Type

- Slow Speed, Minimum Wake
- Lake Boundary



PROPOSED BOATING RESTRICTED AREAS: PHASE II



Lake Conway (North)

Legend

Zone Type

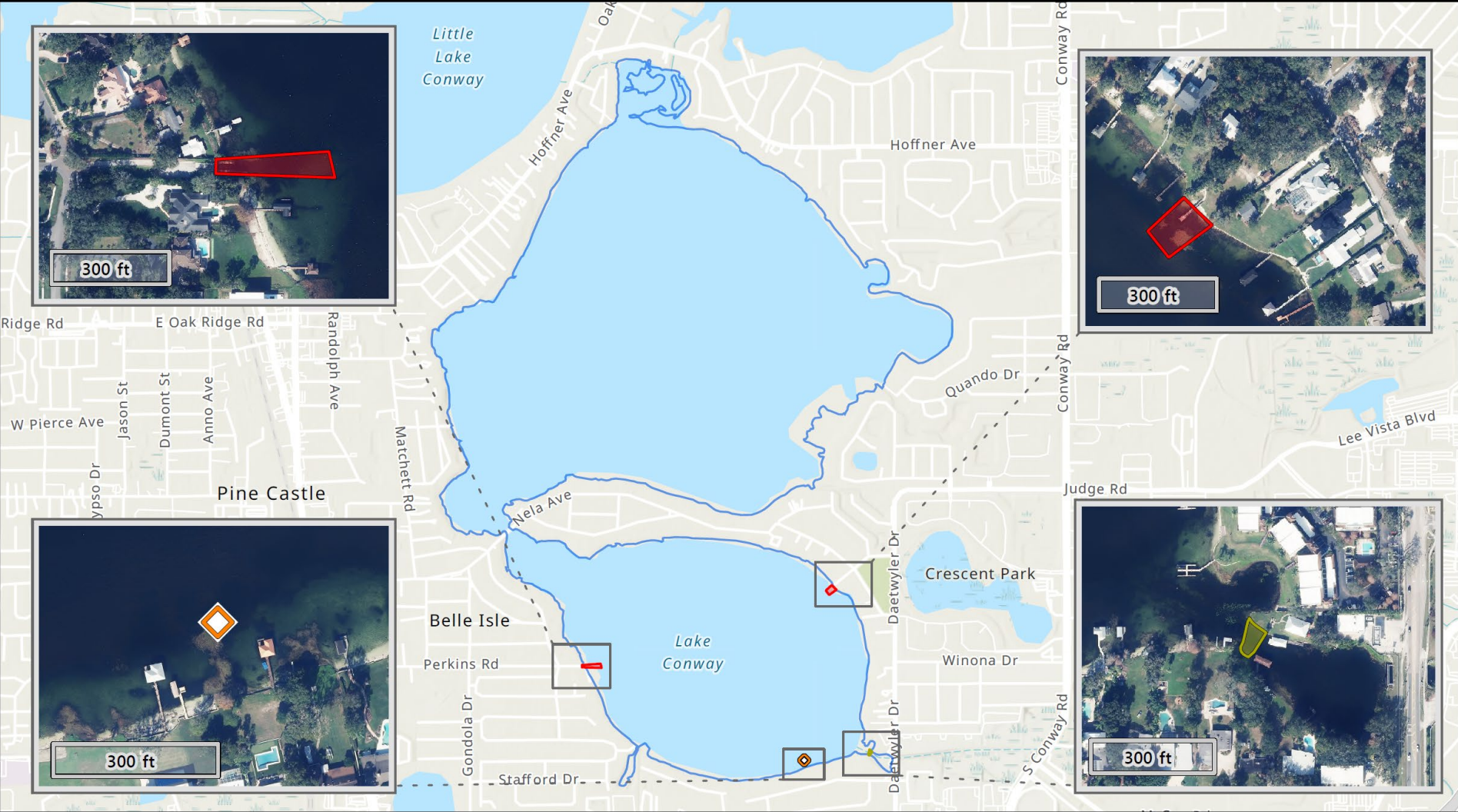
- Slow Speed, Minimum Wake
- ▲ Submerged Rock
- Lake Boundary

0 0.13 0.25 Miles





PROPOSED BOATING RESTRICTED AREAS: PHASE II



Lake Conway (South)

Legend

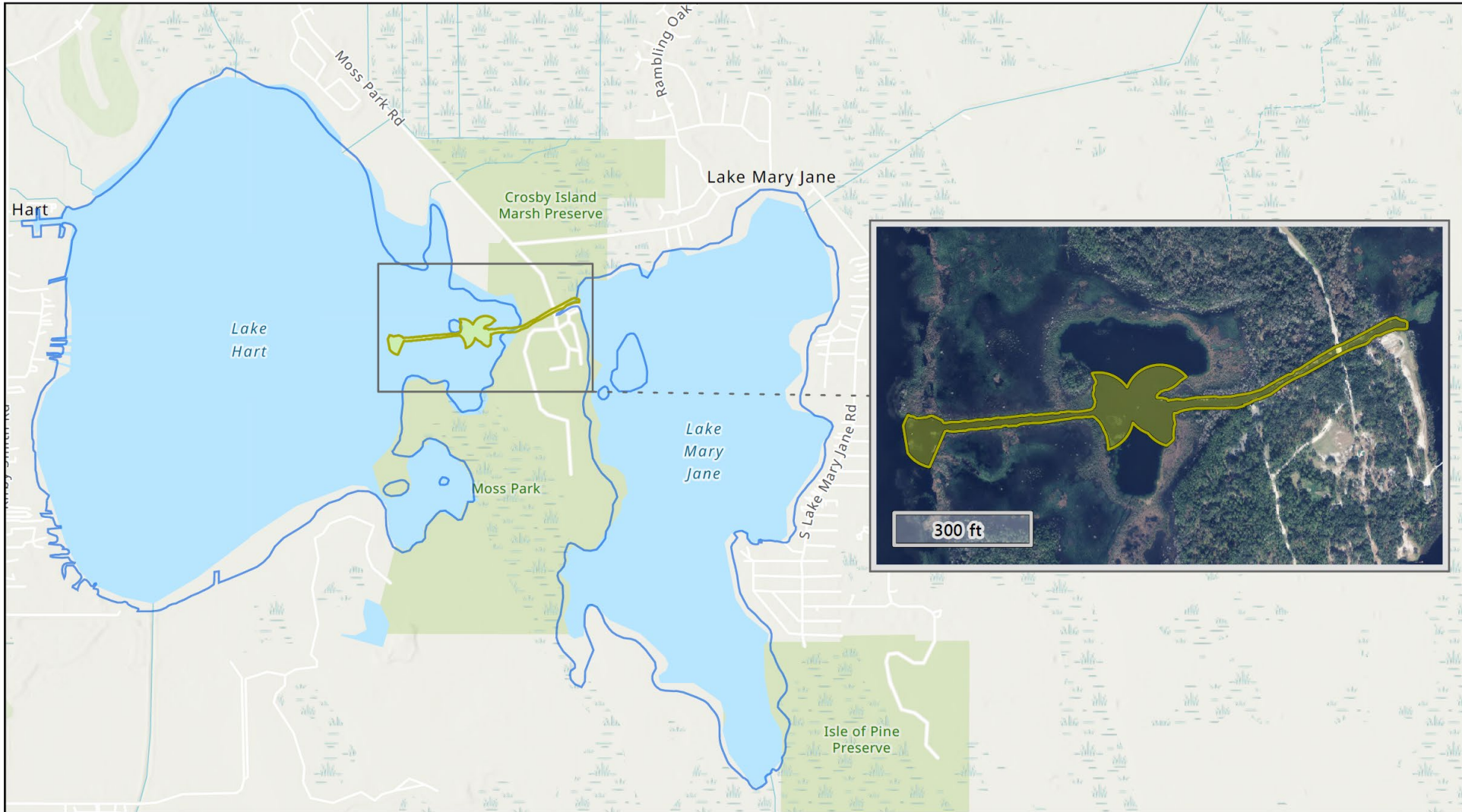
Zone Type

- Idle Speed, No Wake
- Slow Speed, Minimum Wake

Nonregulatory Zone

- Shallow Area
- Lake Boundary



PROPOSED BOATING RESTRICTED AREAS: PHASE II



Lake Hart & Mary Jane

Legend

Zone Type

-  Slow Speed, Minimum Wake
-  Lake Boundary

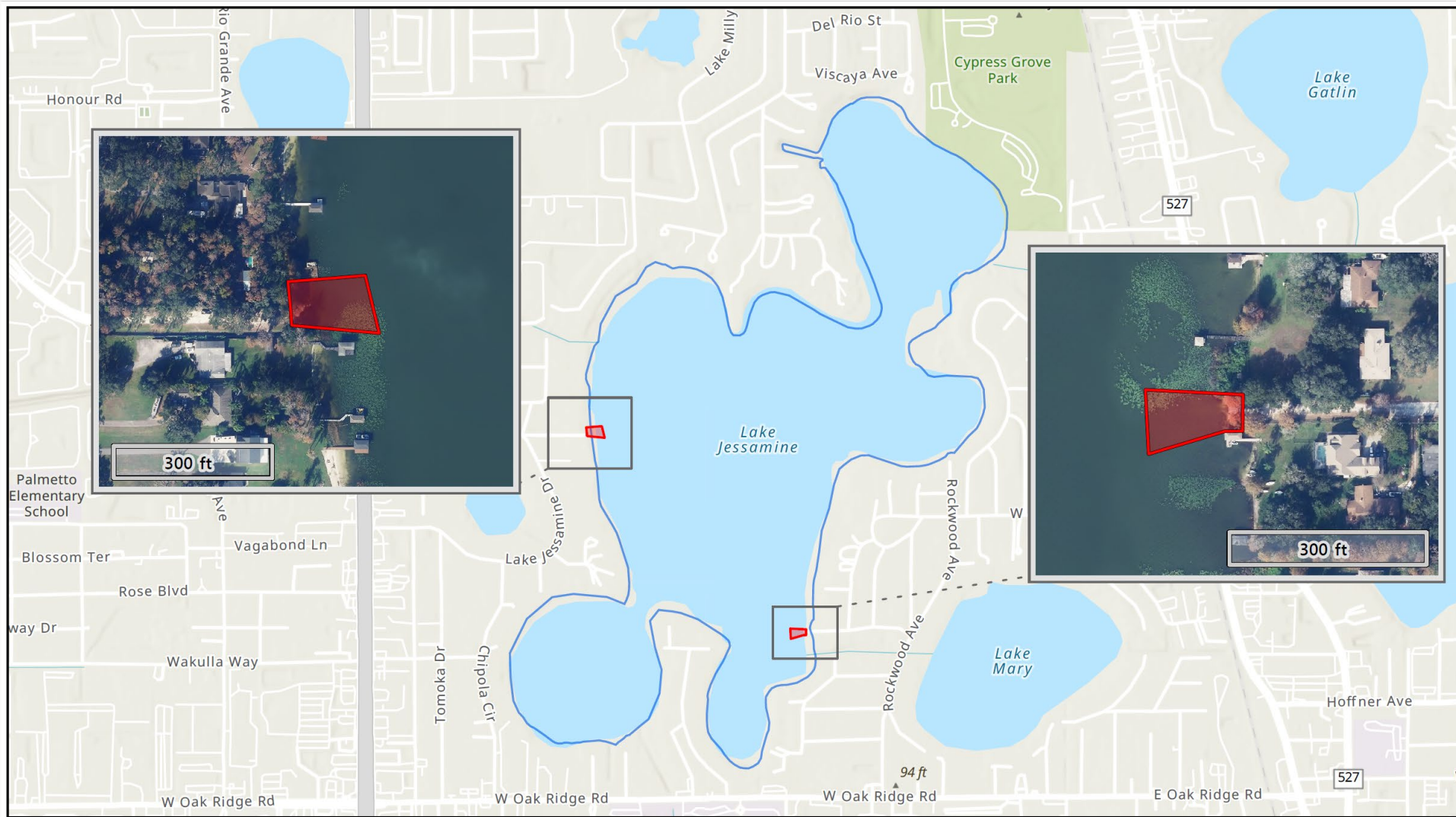


0 0.25 0.5 Miles



ORANGE COUNTY FLORIDA APPLIED ECOLOGY



PROPOSED BOATING RESTRICTED AREAS: PHASE II



Lake Jessamine

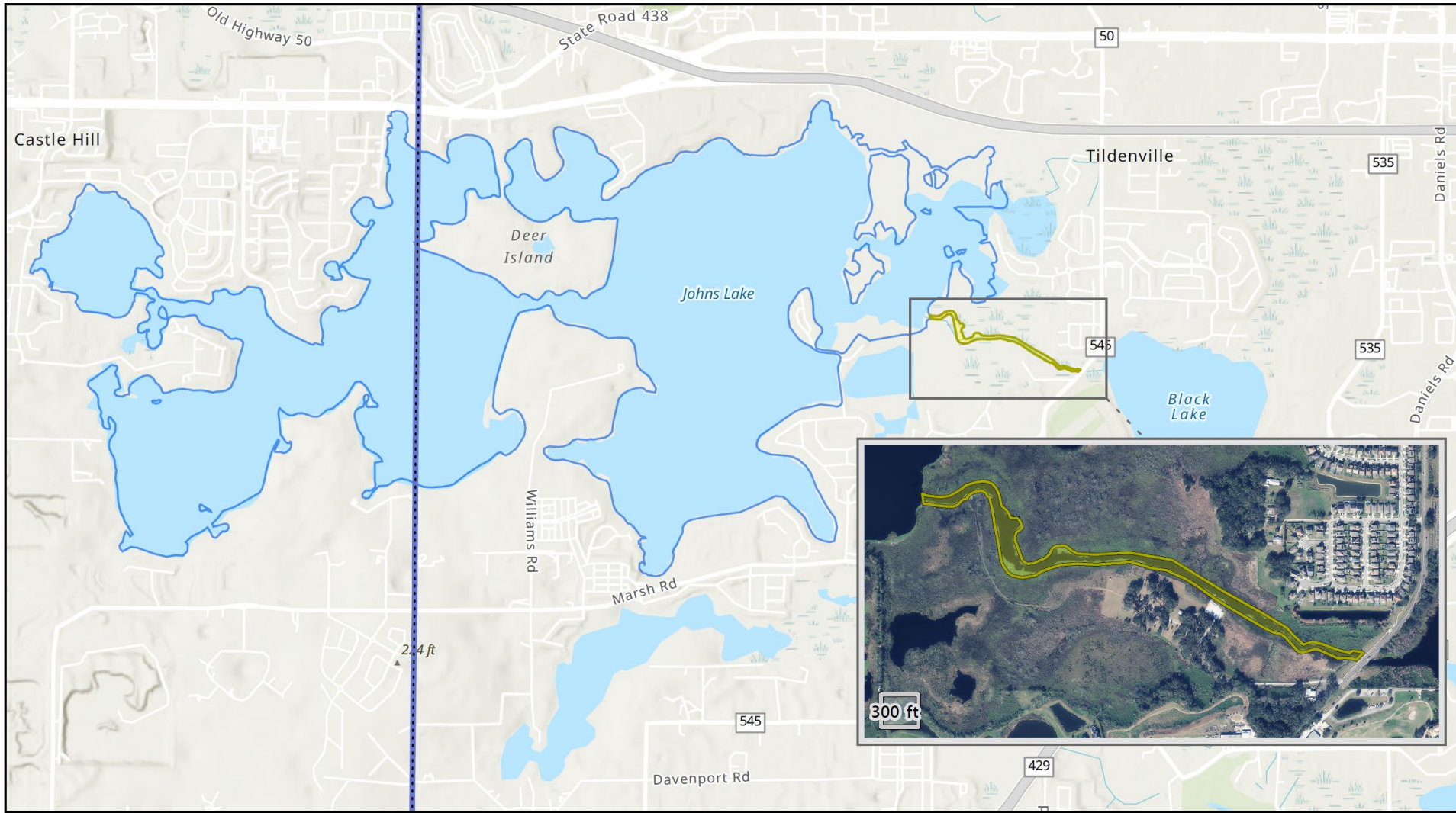
Legend

Zone Type

-  Idle Speed, No Wake
-  Lake Boundary



PROPOSED BOATING RESTRICTED AREAS: PHASE II



Johns Lake

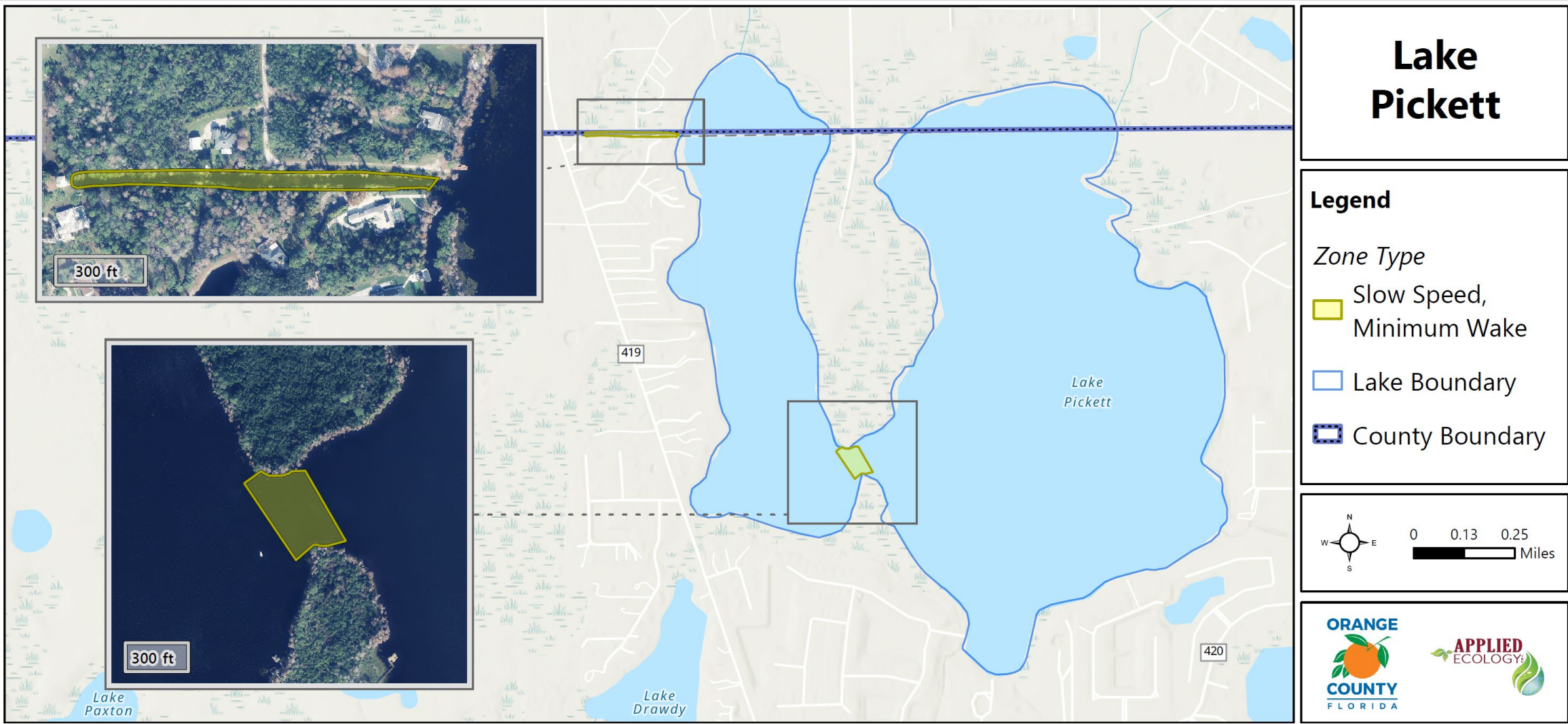
Legend

Zone Type

- Slow Speed, Minimum Wake
- Lake Boundary
- County Boundary

0 0.25 0.5 Miles

PROPOSED BOATING RESTRICTED AREAS: PHASE II



STAKEHOLDERS

Internal Collaboration

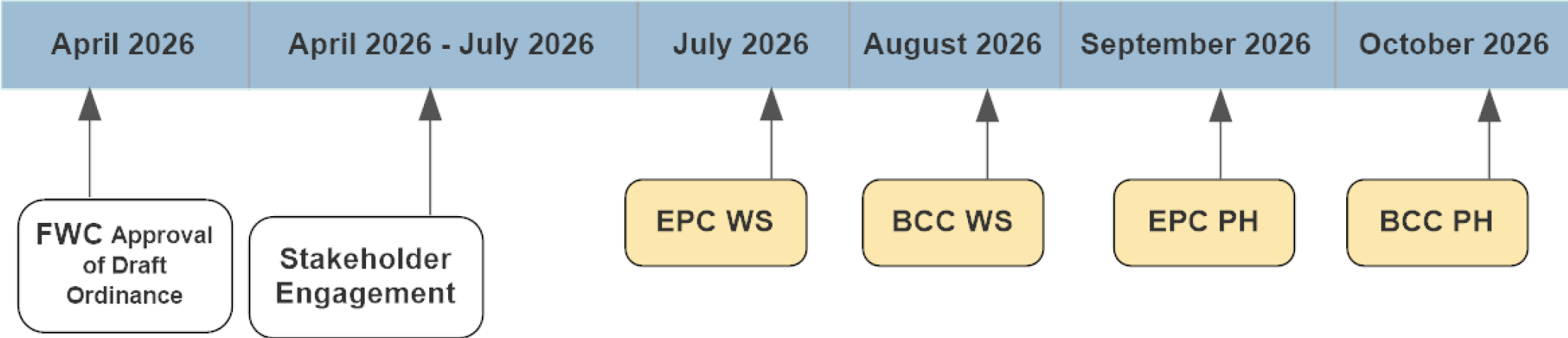
- Orange County Attorney's Office
- Orange County Risk Management
- Orange County Sheriff's Office
- Orange County Sheriff's Office Legal Counsel
- Florida Fish and Wildlife Conservation Commission
Division of Law Enforcement
- Florida Fish and Wildlife Conservation Commission
Boating and Waterways Section

STAKEHOLDERS

External Collaboration

- Environmental Protection Commission
- Governmental agencies
- Lake Advisory Boards
- Audubon of Florida
- Residents within respective lake taxing districts
- Interested citizens/groups

TIMELINE



SUMMARY

- Chapter 8 needs to be updated to:
 - Remove language not consistent with Chapter 327.46, Florida Statutes
 - Reflect current FWC waterway markers and permit requirements
 - Implement additional waterway markers recommended by the OCSO



QUESTIONS AND COMMENTS

- Lakes@ocfl.net
- <http://orangecountyfl.net/Environment/StakeholderCommentForm.aspx>

